

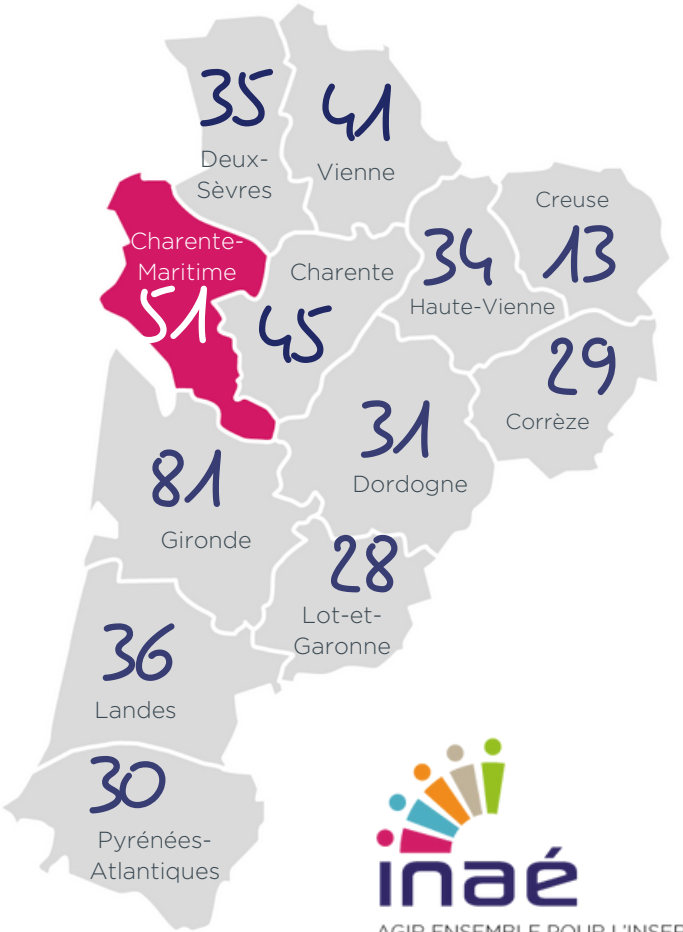
# CHIFFRES CLÉS

## L'IAE en 2021

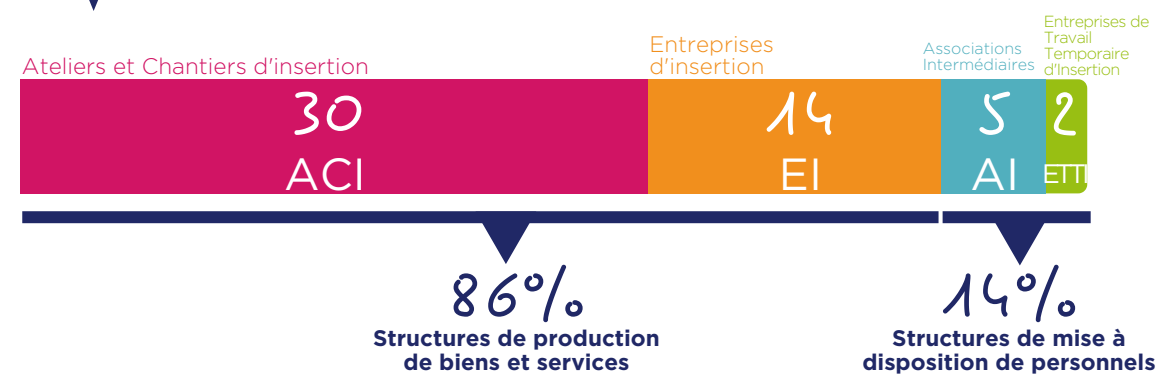
Insertion par l'Activité Economique

### CHARENTE-MARITIME

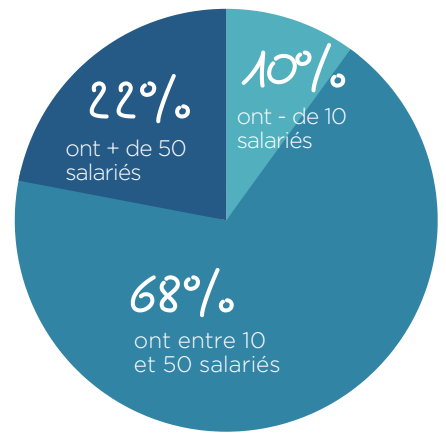
17



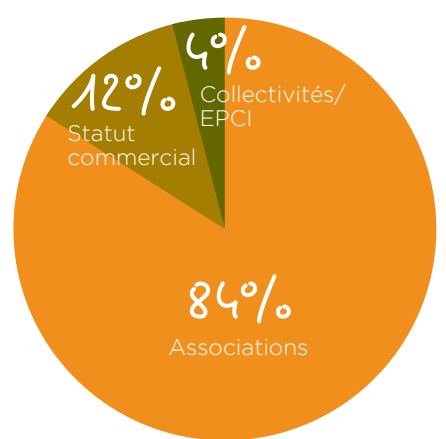
## PORTRAIT DES SIAE



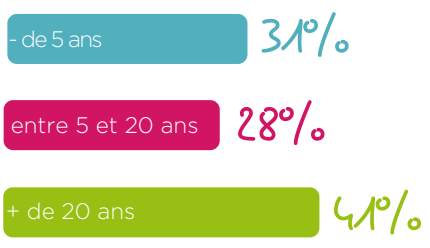
### RÉPARTITION PAR TAILLE (ETP)



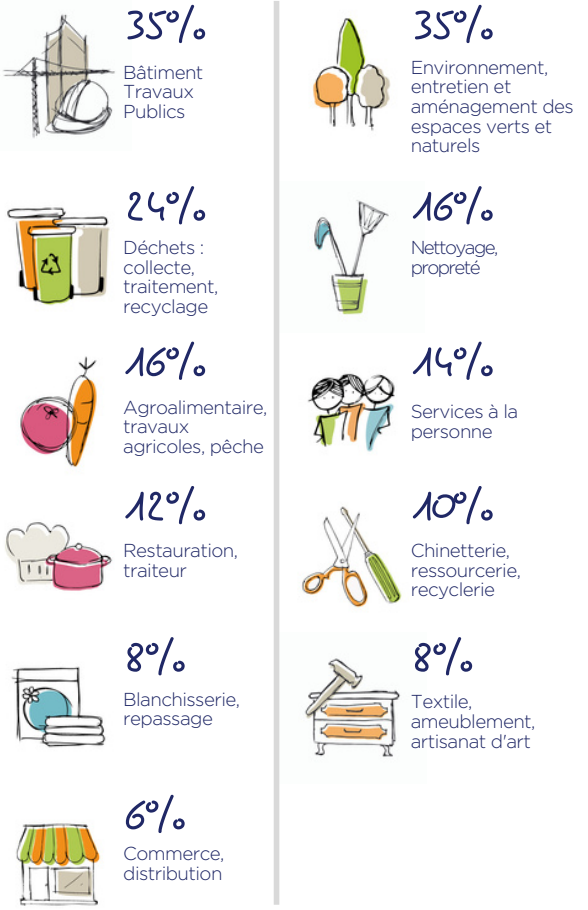
### STATUT JURIDIQUE



### ANCIENNETÉ



### SECTEURS D'ACTIVITÉ

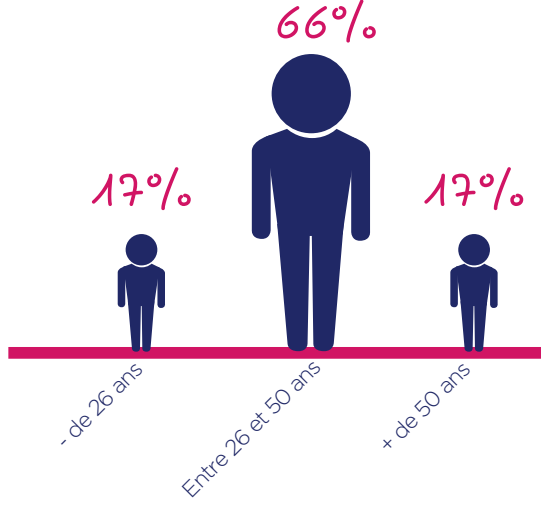
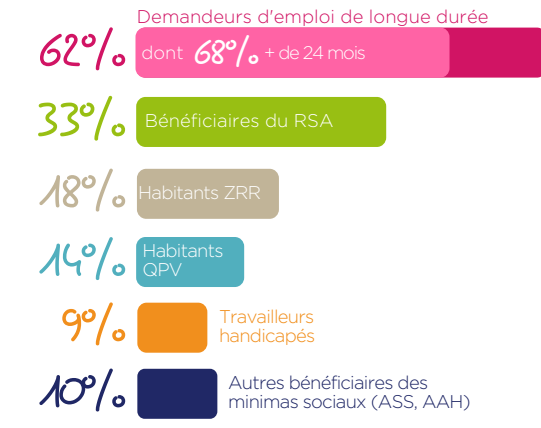


## IMPACT SOCIAL

### PROFIL DES SALARIÉS



soit 1075 ETP



### TREMLIN VERS L'EMPLOI

