

CHIFFRES CLÉS

L'IAE en 2020

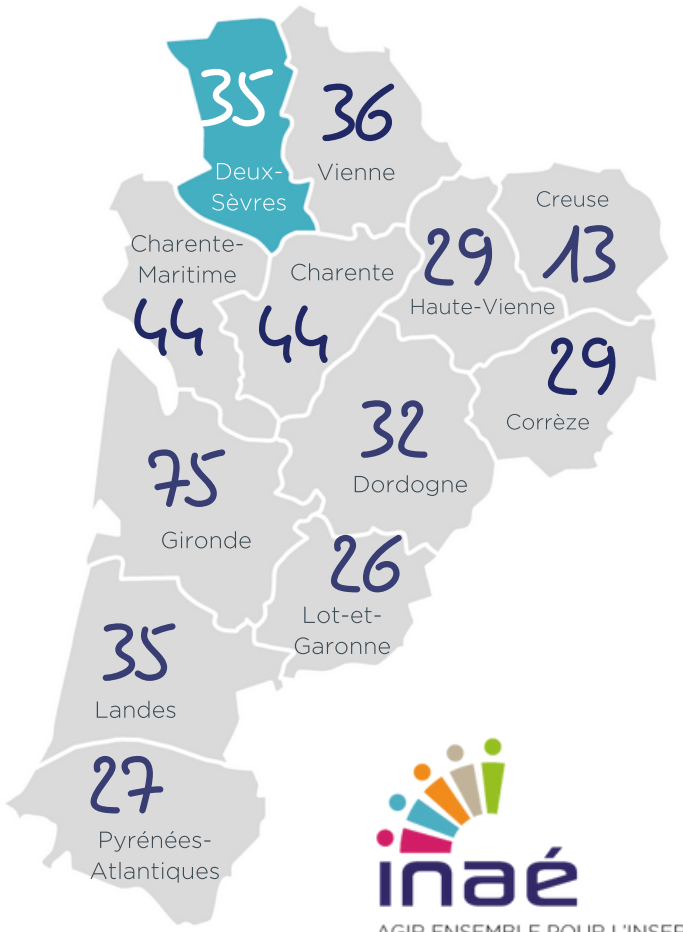
Insertion par l'Activité Economique

DEUX-SÈVRES

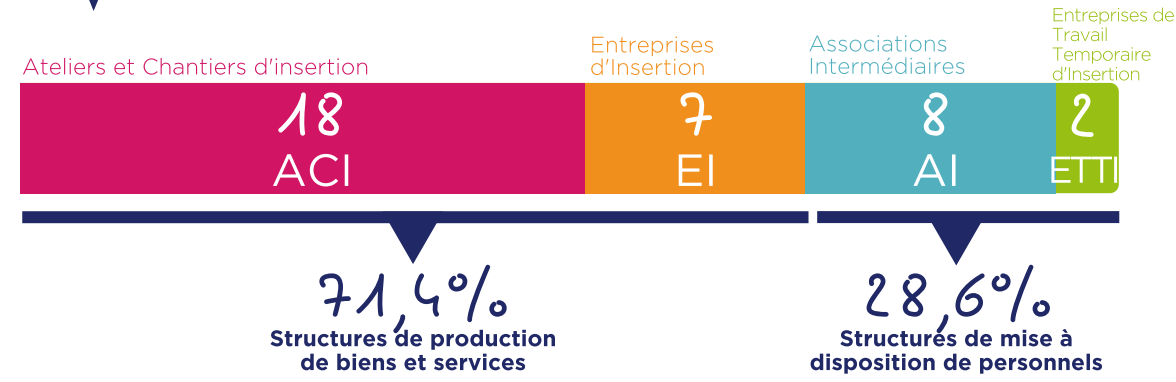
79

35 SIAE

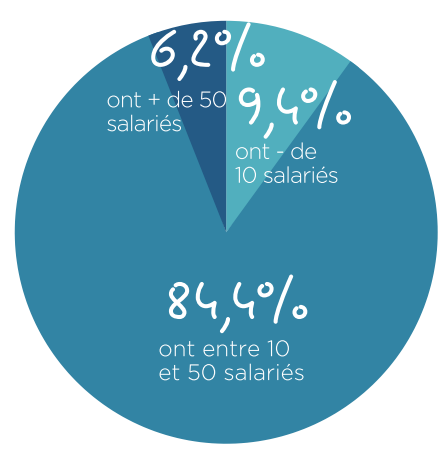
2230 Salariés en parcours



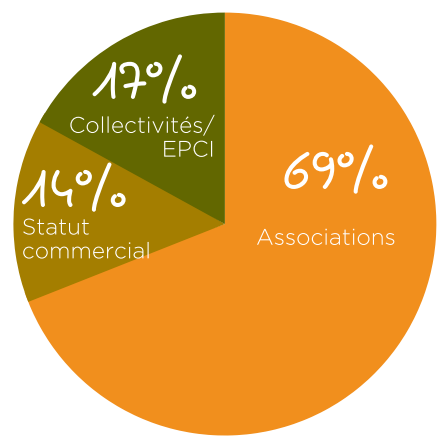
PORTRAIT DES SIAE



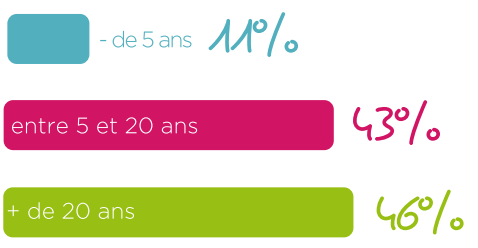
RÉPARTITION PAR TAILLE (ETP)



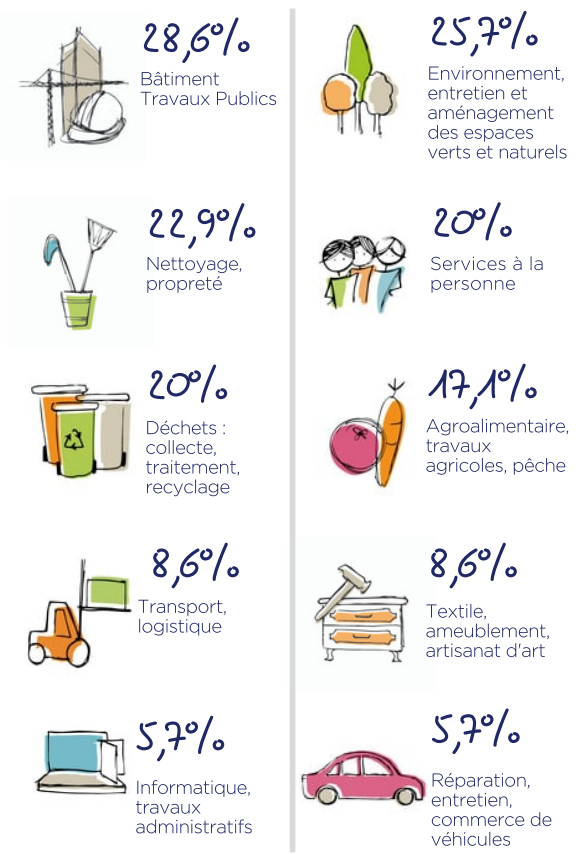
STATUT JURIDIQUE



ANCIENNETÉ



SECTEURS D'ACTIVITÉ

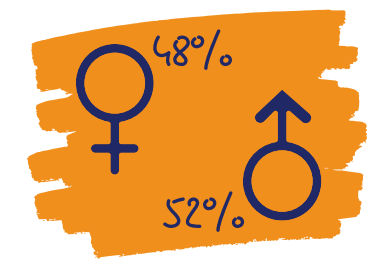
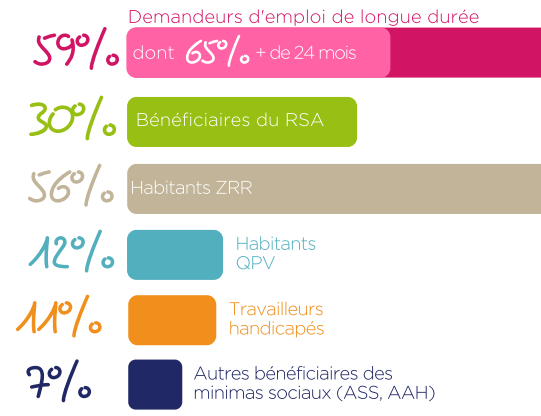


IMPACT SOCIAL

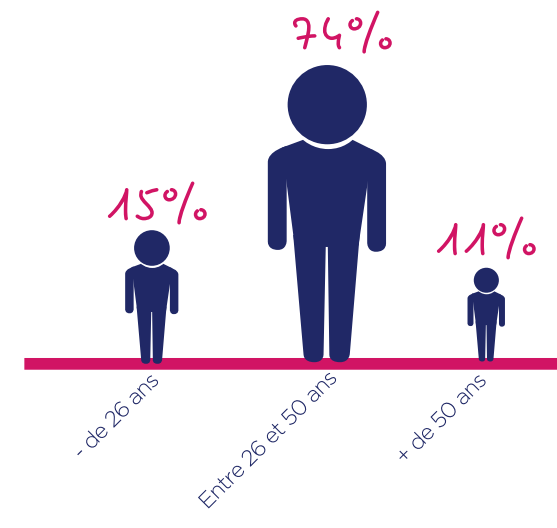
PROFIL DES SALARIÉS

2230 Salariés en parcours

soit 470 ETP



78% des salariés ont un niveau inférieur au Bac



TREMLIN VERS L'EMPLOI

