

CHIFFRES CLÉS

L'IAE en 2020

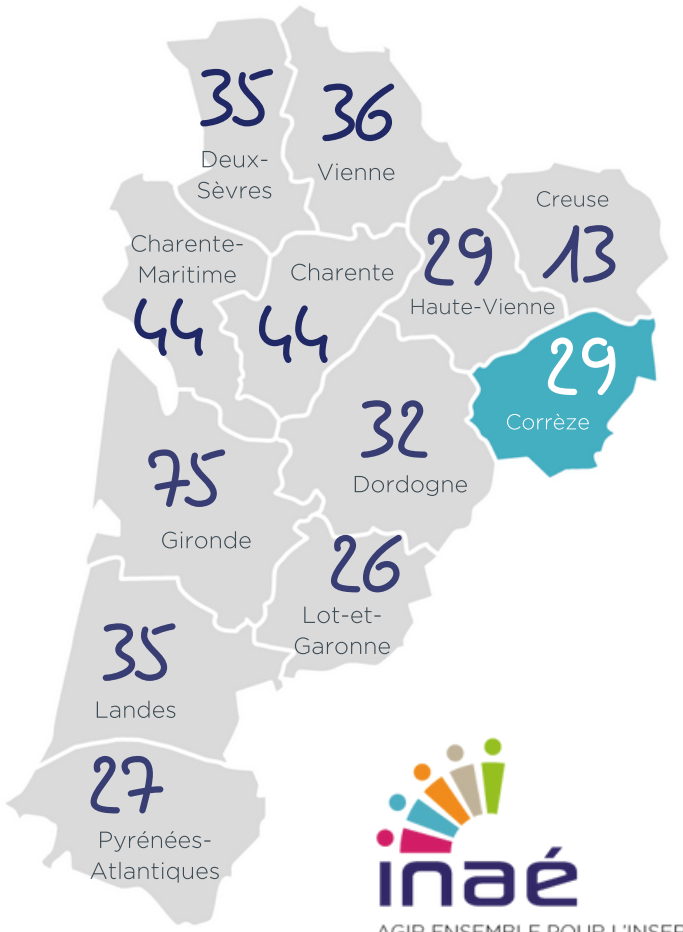
Inserion par l'Activité Economique

CORRÈZE

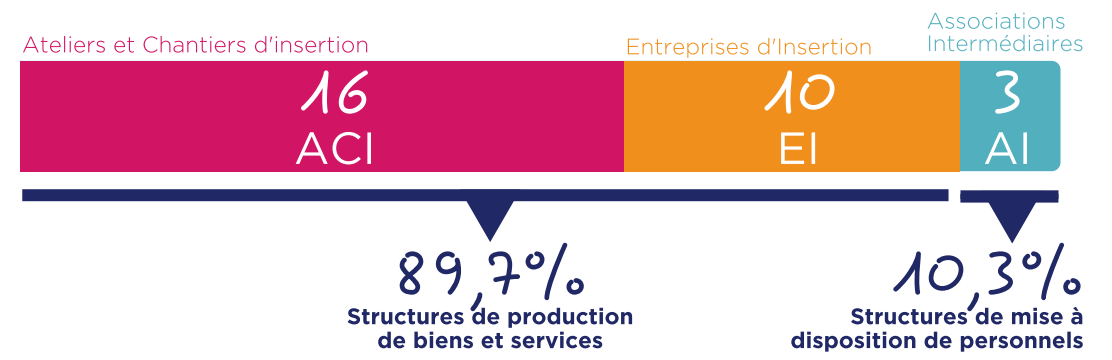
19

29 SIAE

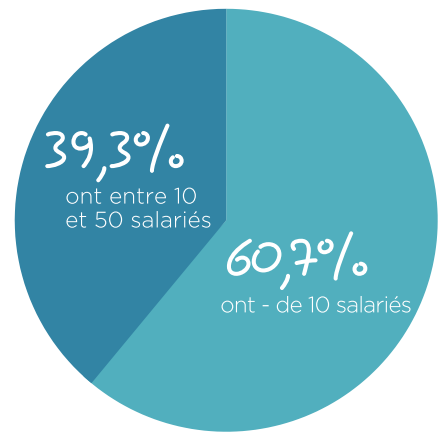
660 Salariés en parcours



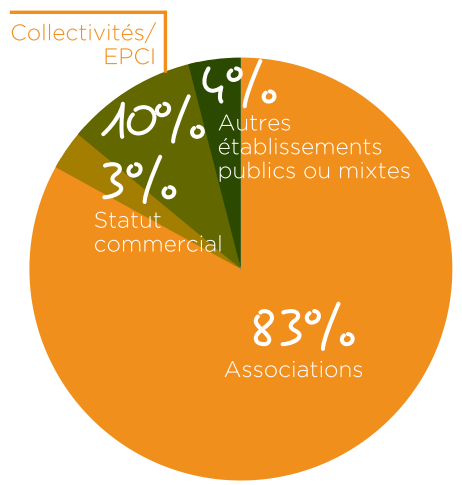
PORTRAIT DES SIAE



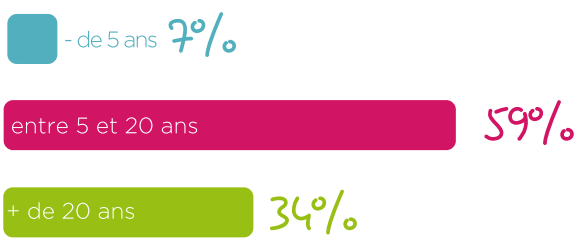
RÉPARTITION PAR TAILLE (ETP)



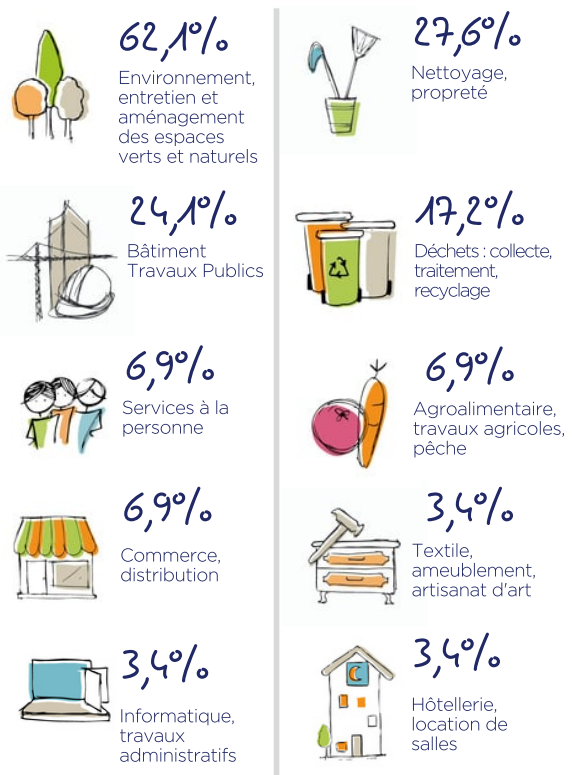
STATUT JURIDIQUE



ANCIENNETÉ



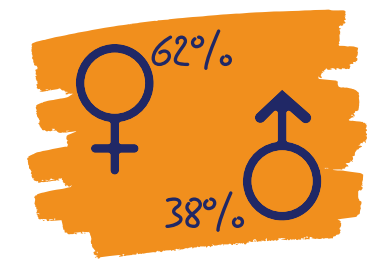
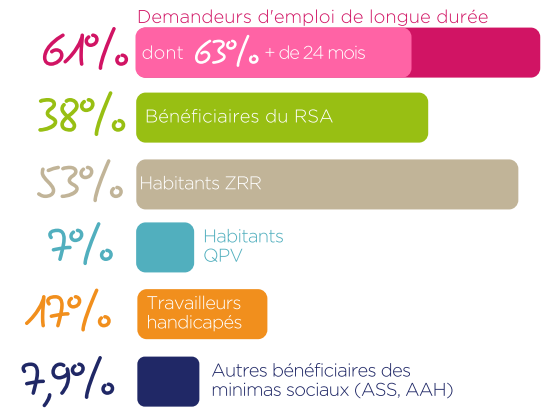
SECTEURS D'ACTIVITÉ



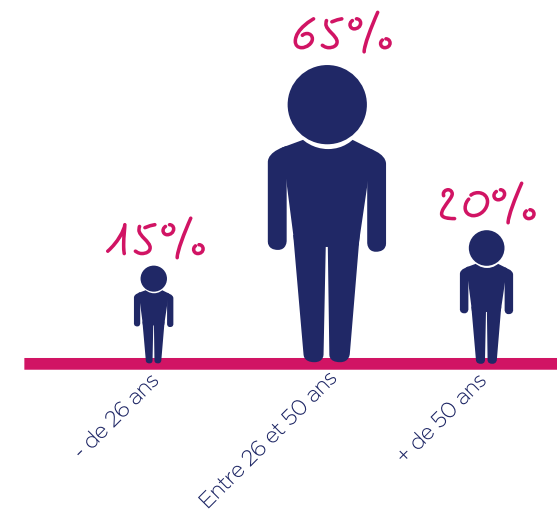
IMPACT SOCIAL

PROFIL DES SALARIÉS

660 Salariés en parcours
soit 210 ETP



77% des salariés ont un niveau inférieur au Bac



TREMLIN VERS L'EMPLOI

