

CHIFFRES CLÉS

L'IAE en 2020

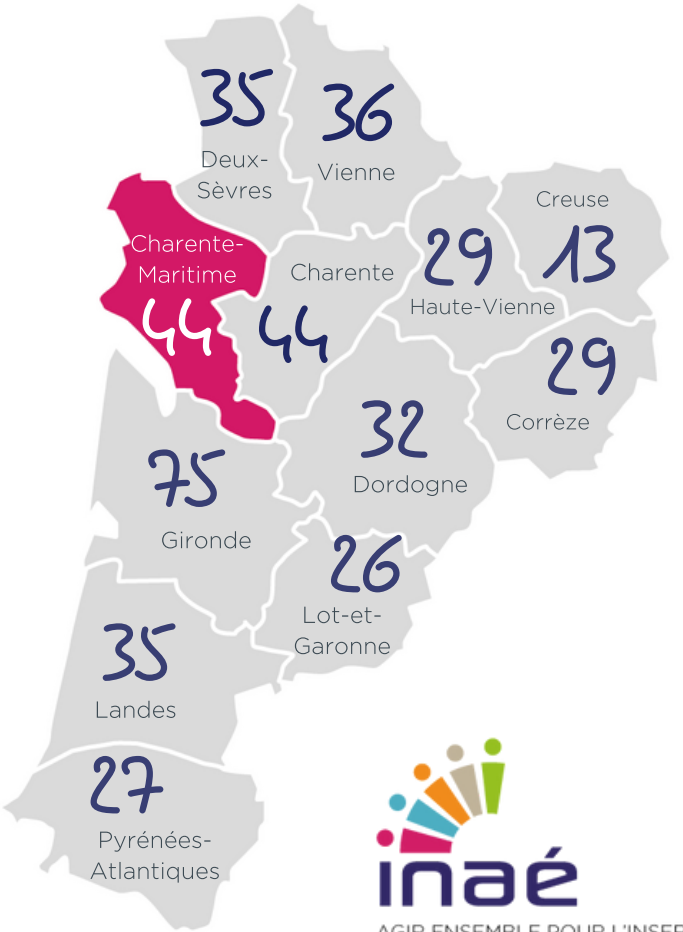
Insertion par l'Activité Economique

CHARENTE-MARITIME

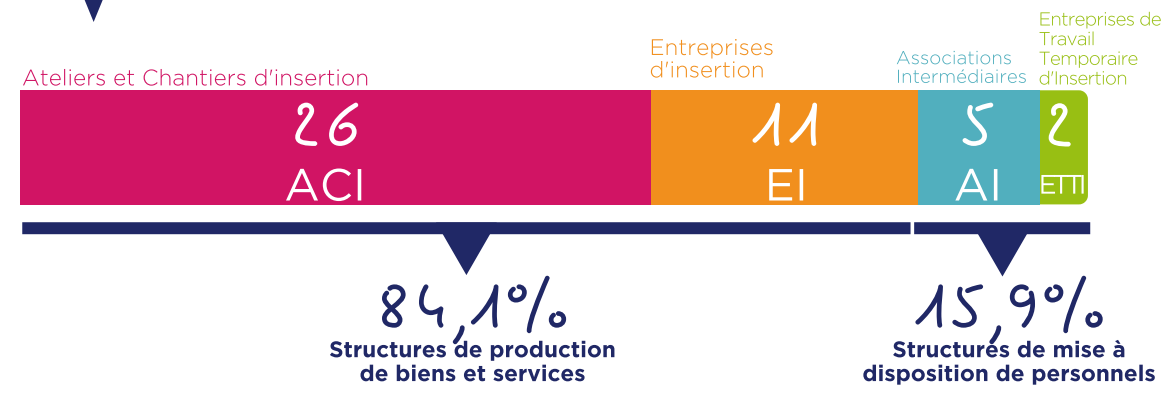
17

44 SIAE

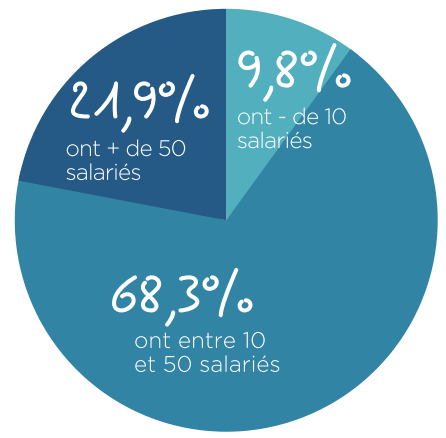
3050 Salariés en parcours



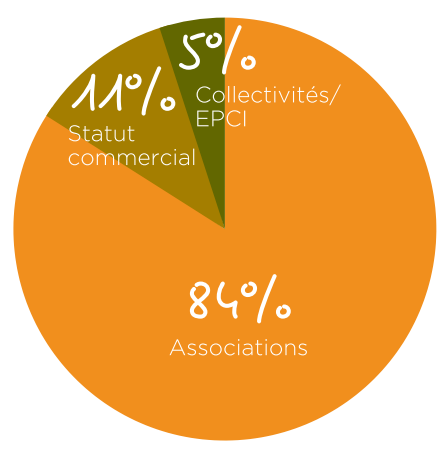
PORTRAIT DES SIAE



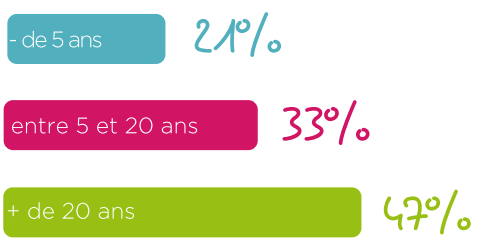
RÉPARTITION PAR TAILLE (ETP)



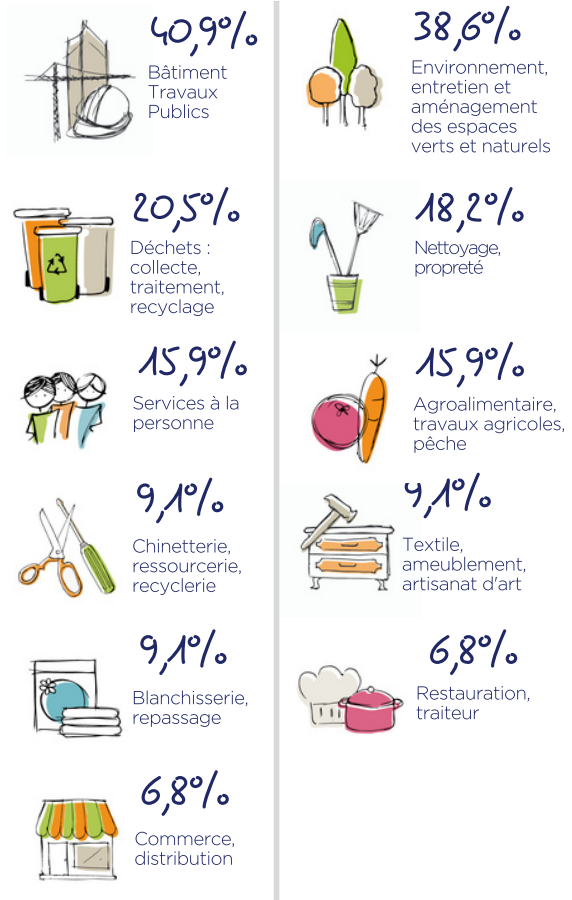
STATUT JURIDIQUE



ANCIENNETÉ



SECTEURS D'ACTIVITÉ

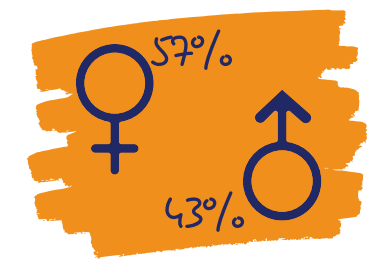
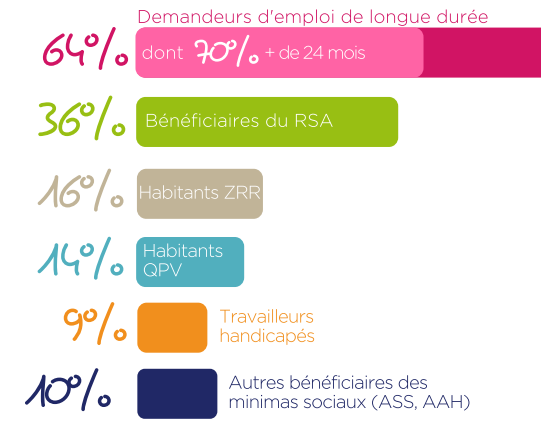


IMPACT SOCIAL

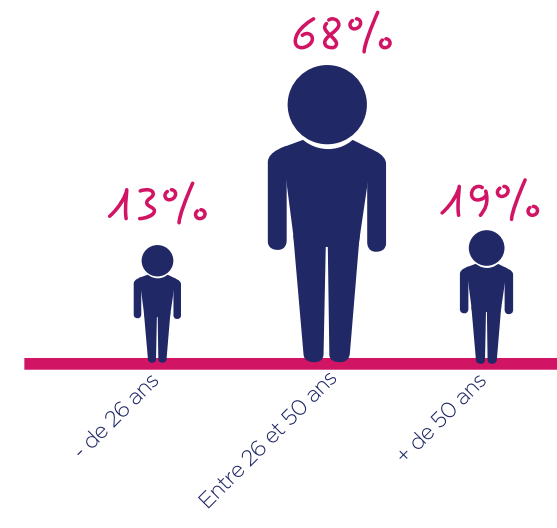
PROFIL DES SALARIÉS

3050 Salariés en parcours

soit 885 ETP



82% des salariés ont un niveau inférieur au Bac



TREMPIN VERS L'EMPLOI

