

# CHIFFRES CLÉS

## L'IAE en 2020

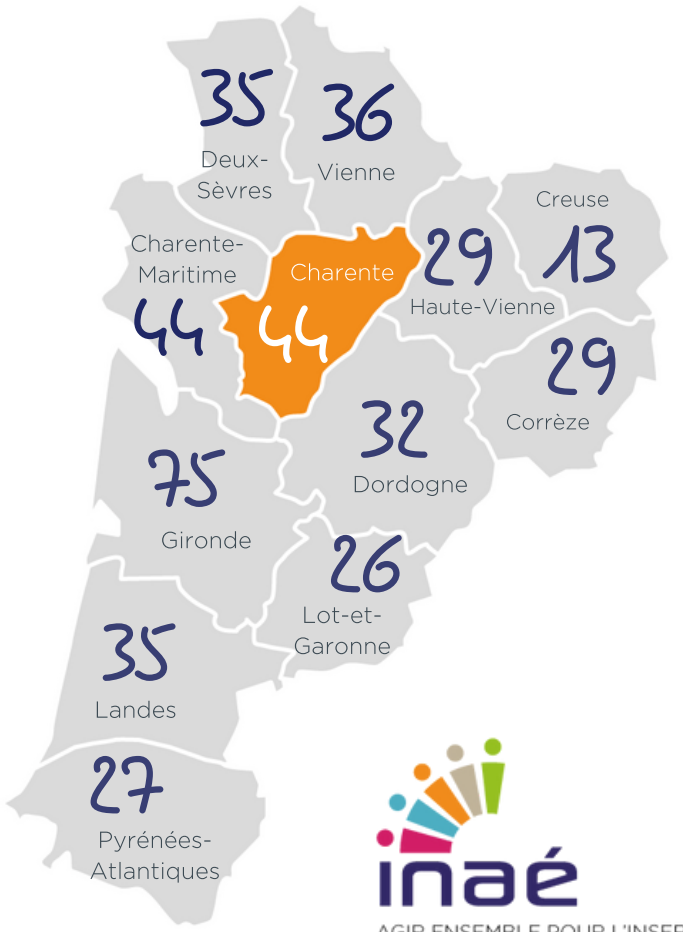
Insertion par l'Activité Economique

### CHARENTE

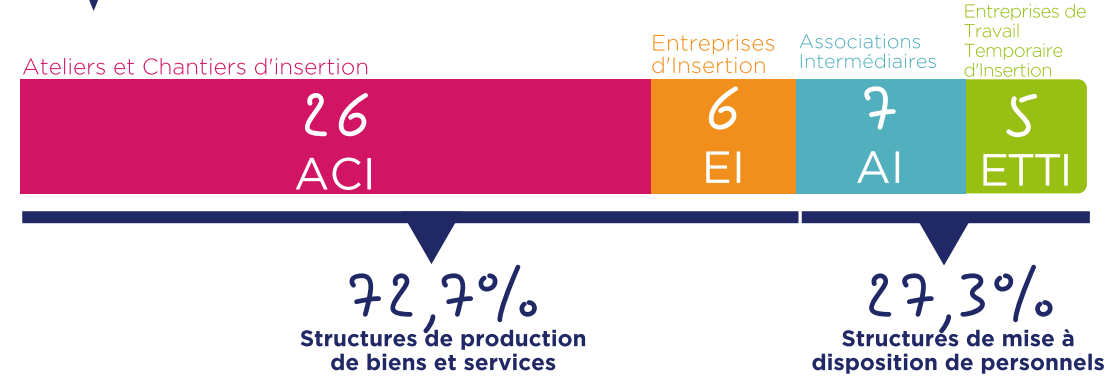
16

44 SIAE

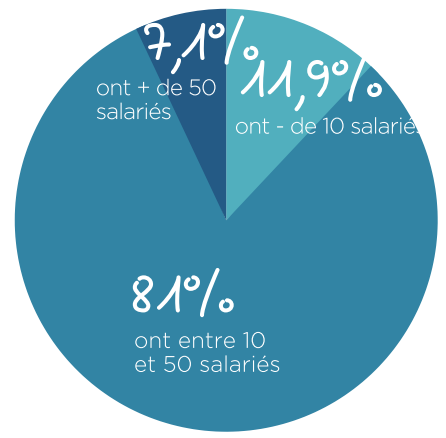
2430 Salariés en parcours



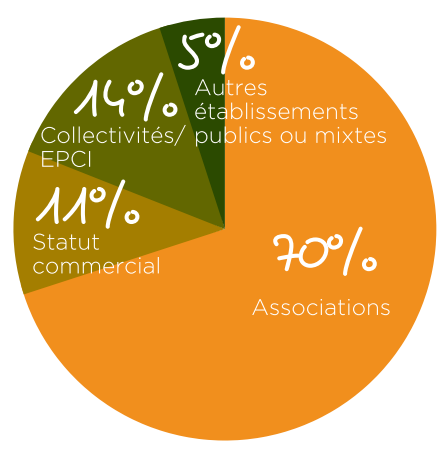
## PORTRAIT DES SIAE



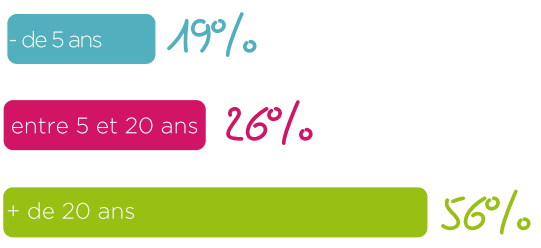
### RÉPARTITION PAR TAILLE (ETP)



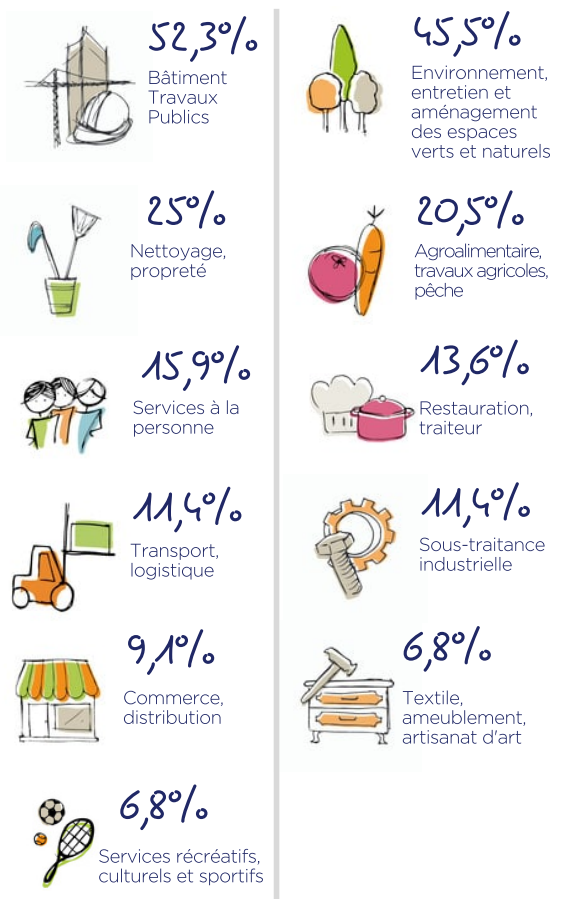
### STATUT JURIDIQUE



### ANCIENNETÉ



### SECTEURS D'ACTIVITÉ

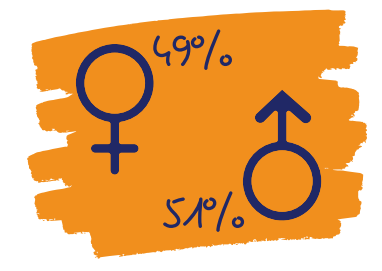


## IMPACT SOCIAL

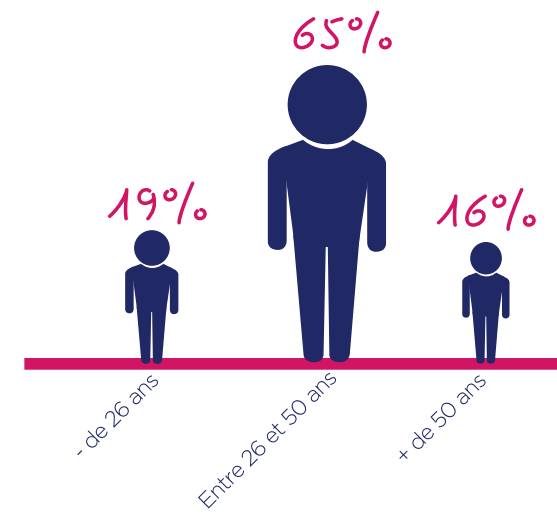
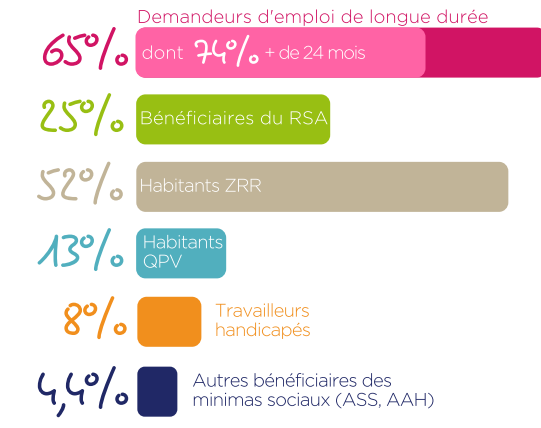
### PROFIL DES SALARIÉS

2430 Salariés en parcours

soit 610 ETP



75% des salariés ont un niveau inférieur au Bac



### TREMLIN VERS L'EMPLOI

