

# CHIFFRES CLÉS

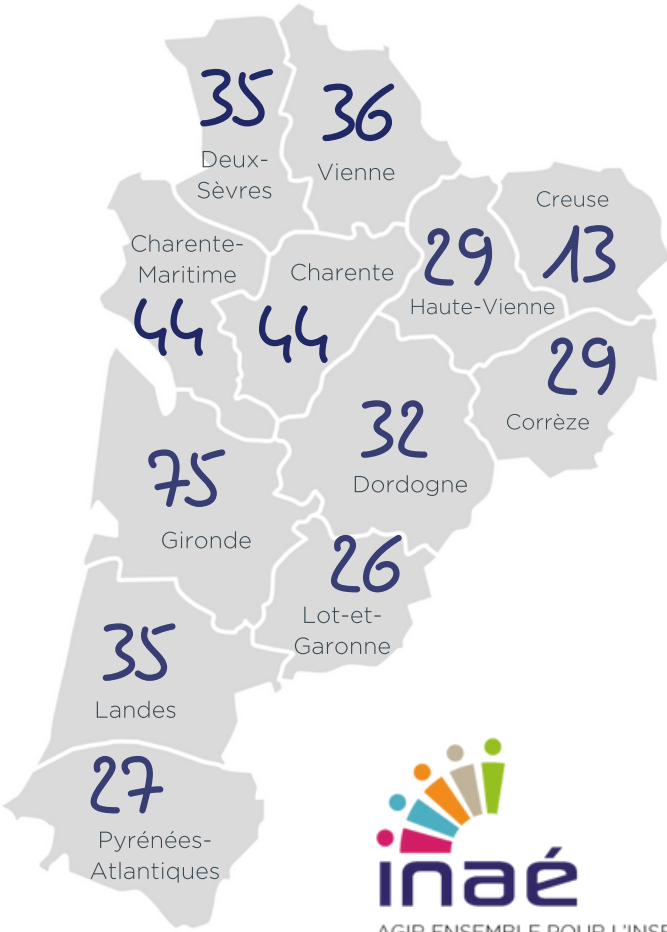
## L'IAE en 2020

Inscription par l'Activité Economique

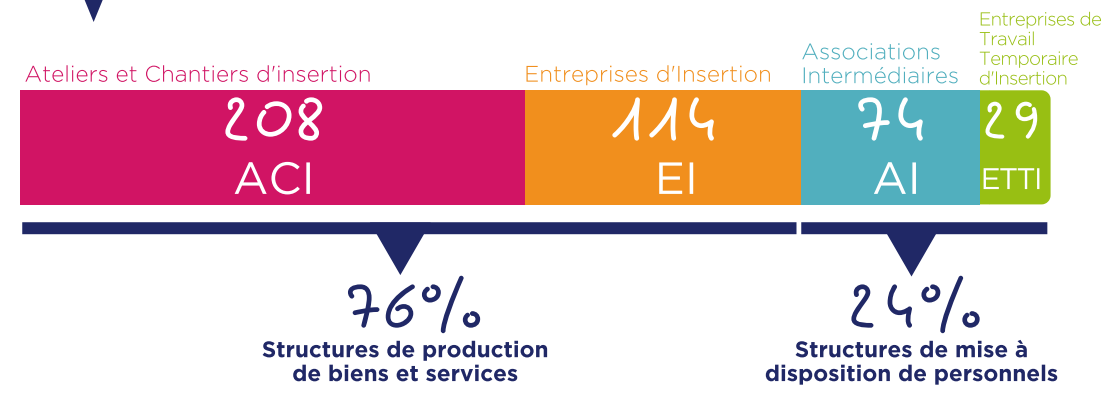
### NOUVELLE-AQUITAINE

425 SIAE

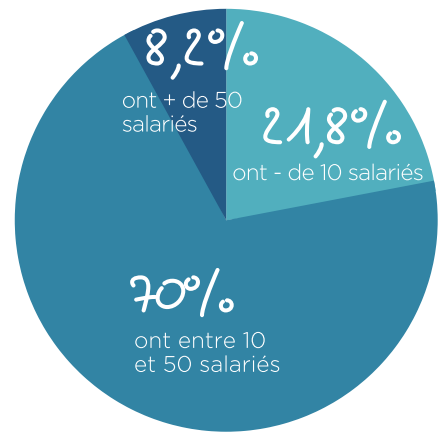
25200 Salariés en parcours



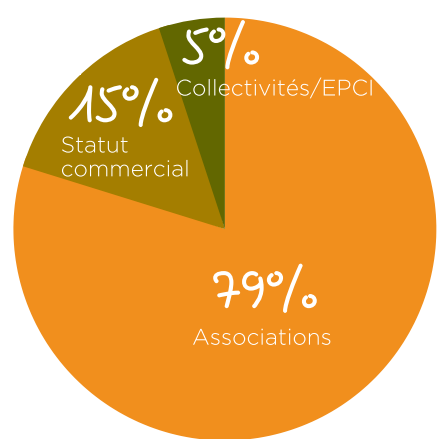
## PORTRAIT DES SIAE



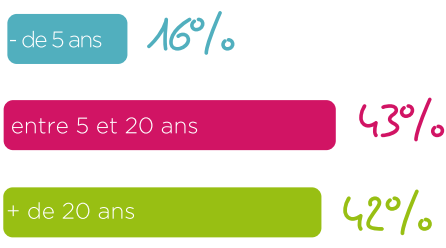
### RÉPARTITION PAR TAILLE (ETP)



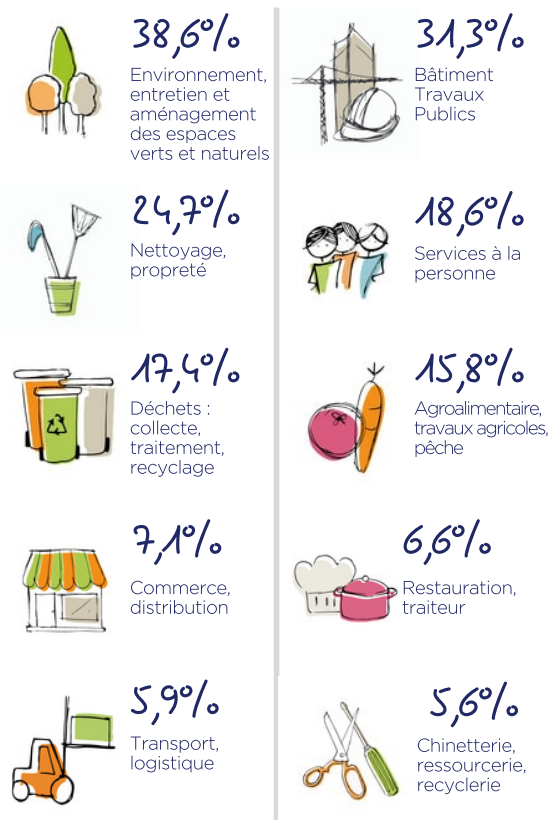
### STATUT JURIDIQUE



### ANCIENNETÉ



### SECTEURS D'ACTIVITÉ

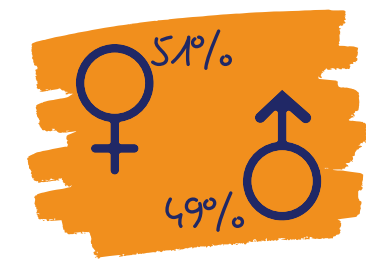
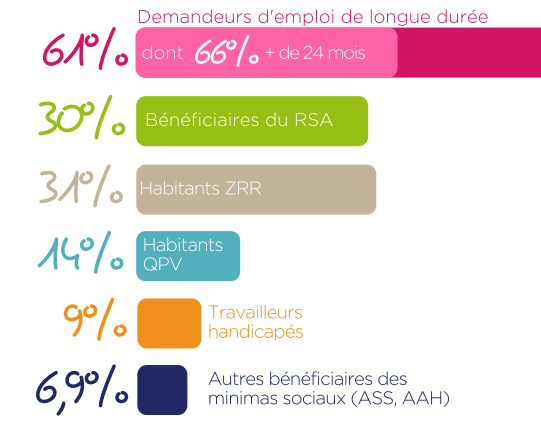


## IMPACT SOCIAL

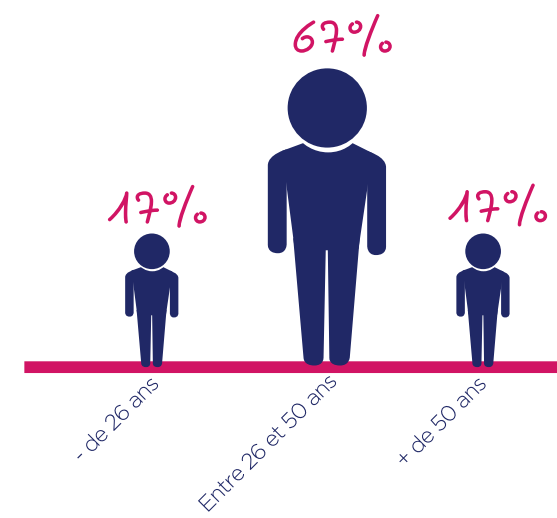
### PROFIL DES SALARIÉS

25200 Salariés en parcours

soit 6260 ETP



77% des salariés ont un niveau inférieur au Bac



### TREMLIN VERS L'EMPLOI

