

CHIFFRES CLÉS

L'IAE en 2019

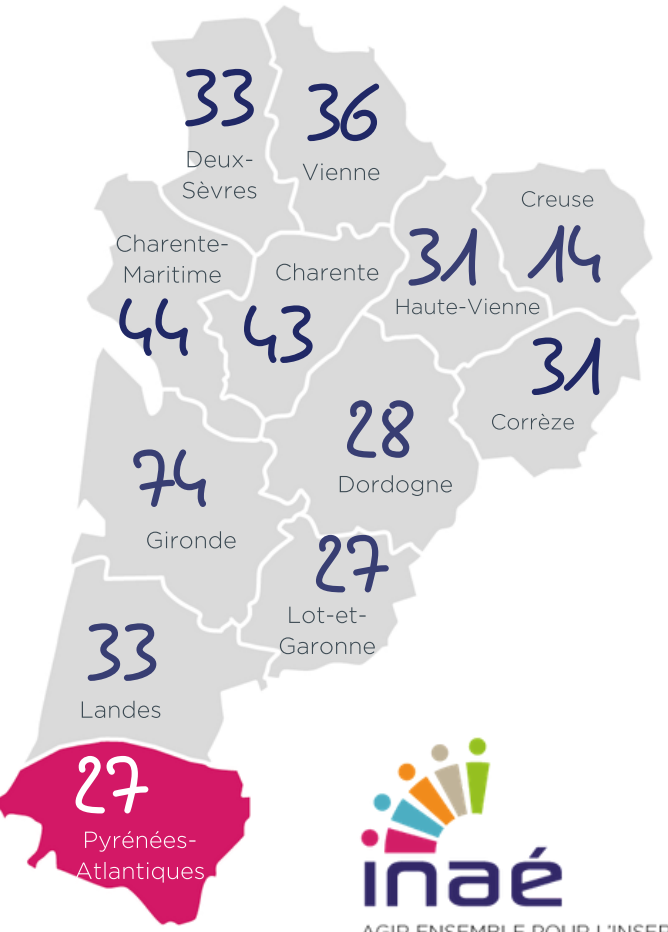
Inserion par l'Activité Economique

PYRÉNÉES-ATLANTIQUES

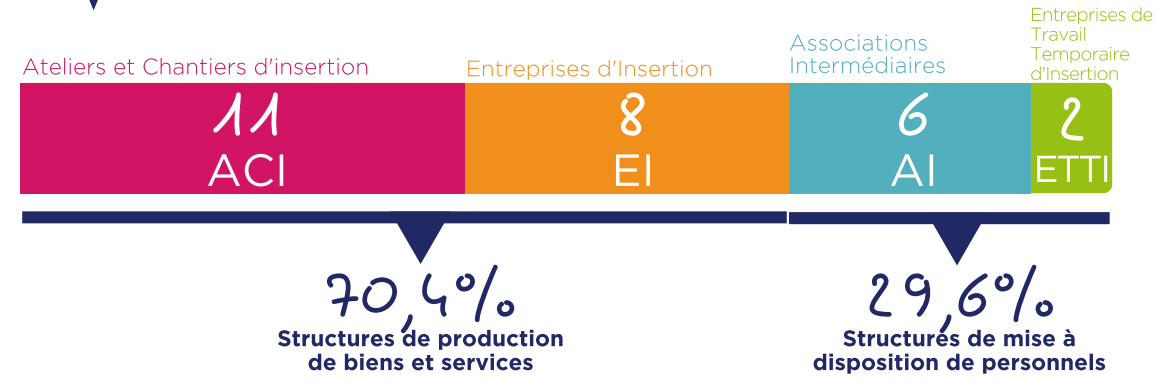
27 SIAE

2360 Salariés en parcours

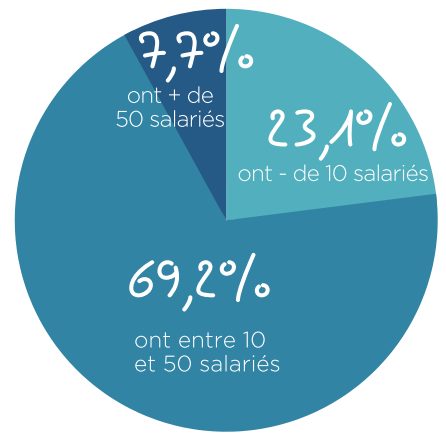
64



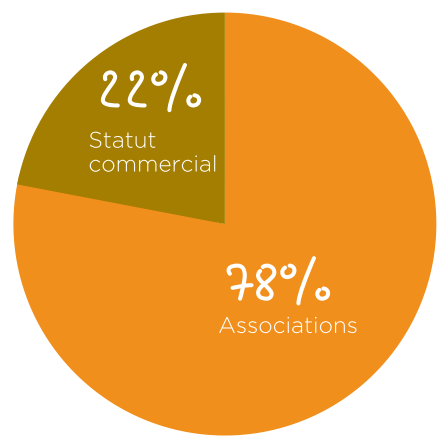
PORTRAIT DES SIAE



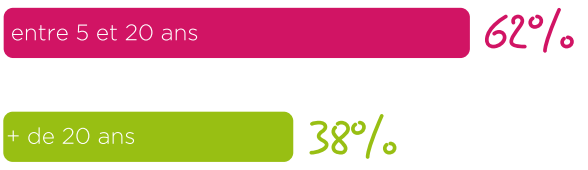
RÉPARTITION PAR TAILLE (ETP)



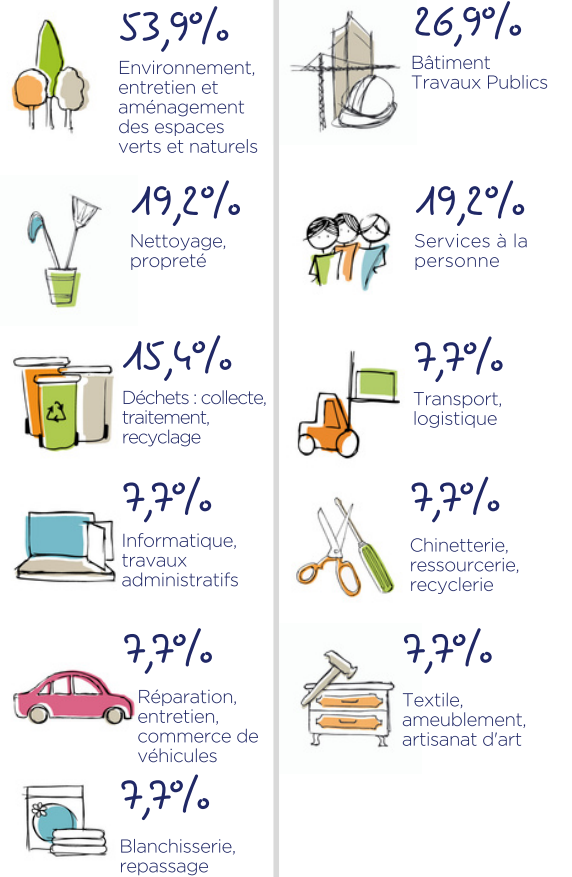
STATUT JURIDIQUE



ANCIENNETÉ



SECTEURS D'ACTIVITÉ

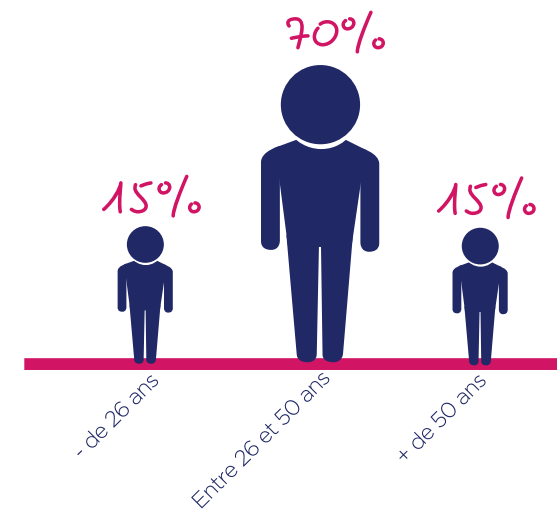
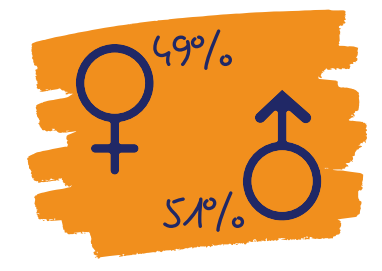
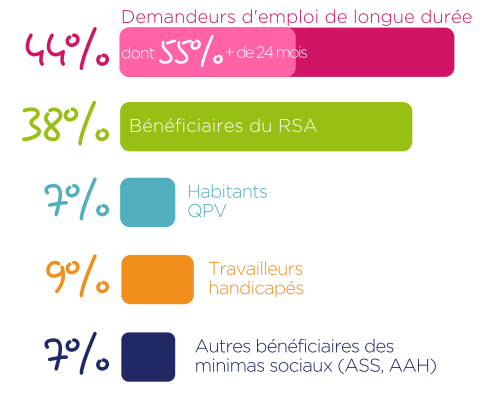


IMPACT SOCIAL

PROFIL DES SALARIÉS

2360 Salariés en parcours

soit 550 ETP



69% des salariés ont un niveau inférieur au Bac

TREMLIN VERS L'EMPLOI

