

# CHIFFRES CLÉS

## L'IAE en 2019

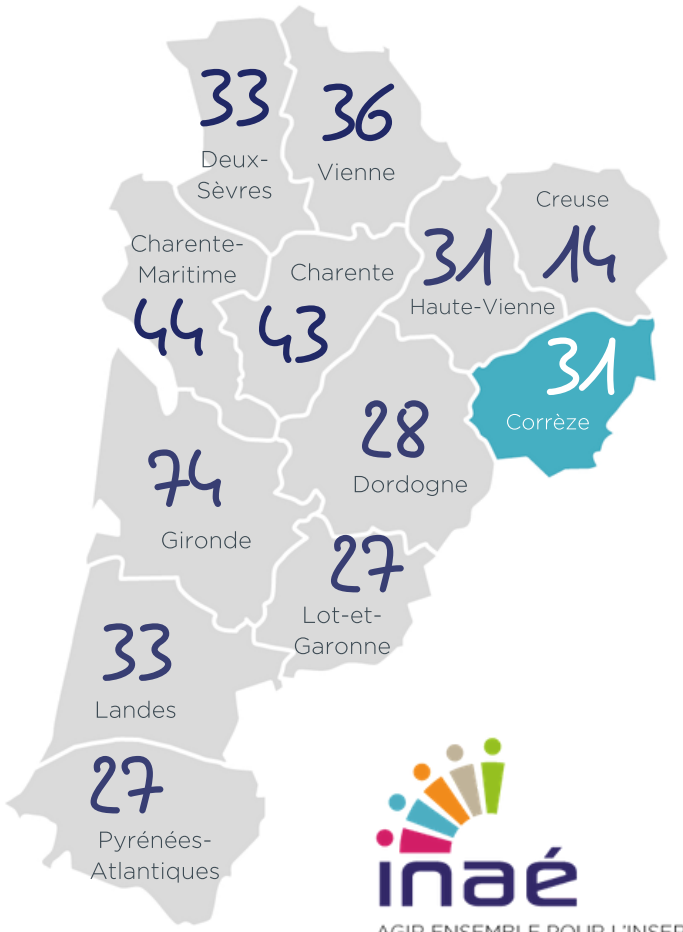
Inserion par l'Activité Economique

### CORRÈZE

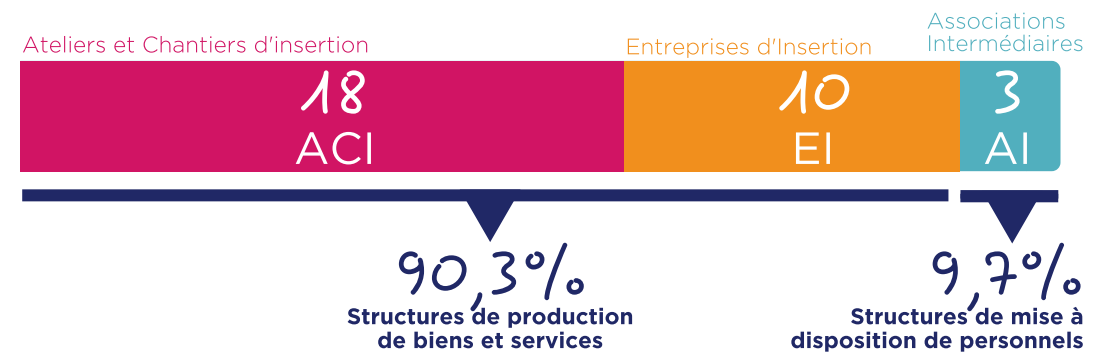
31 SIAE

720 Salariés en parcours

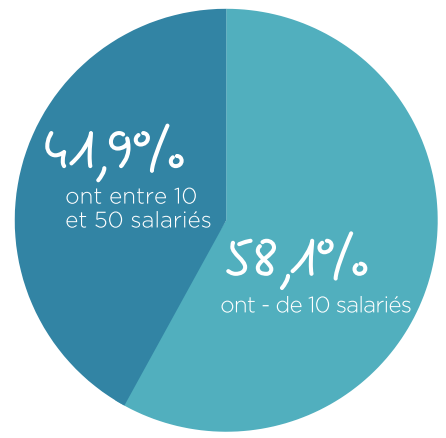
19



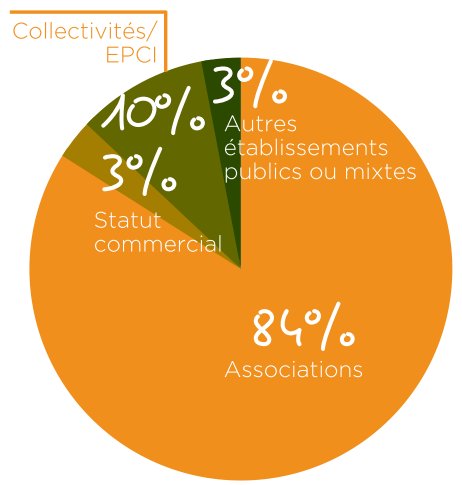
## PORTRAIT DES SIAE



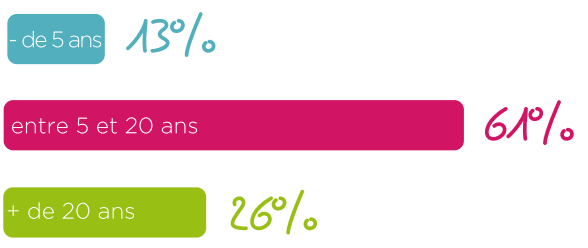
### RÉPARTITION PAR TAILLE (ETP)



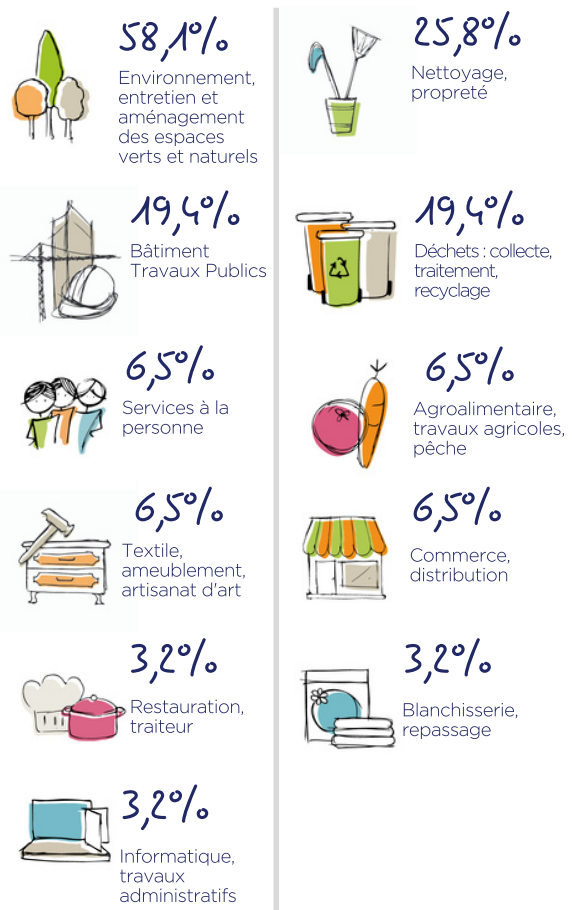
### STATUT JURIDIQUE



### ANCIENNETÉ



### SECTEURS D'ACTIVITÉ

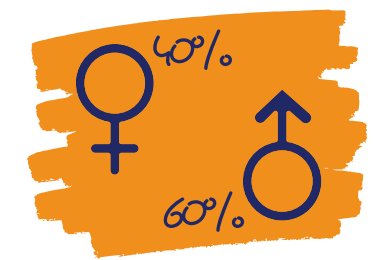
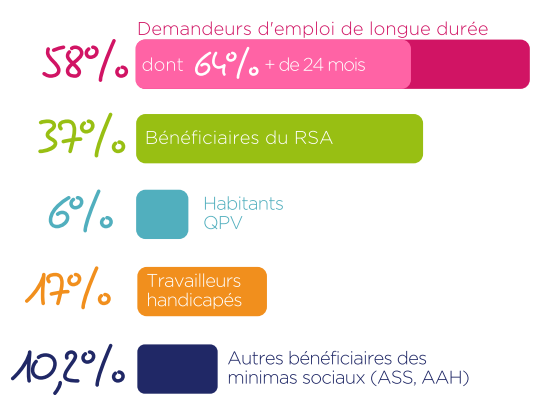


## IMPACT SOCIAL

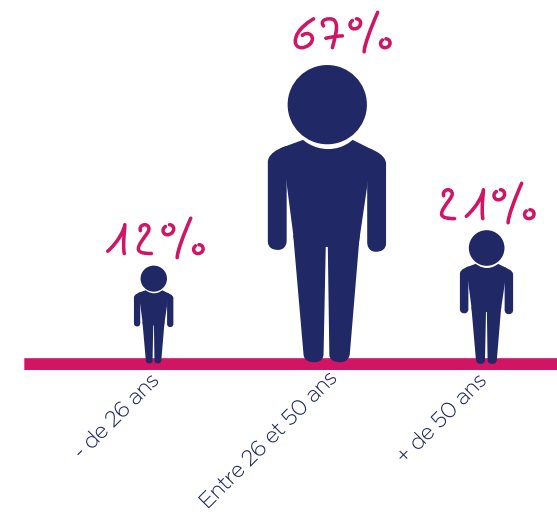
### PROFIL DES SALARIÉS

720 Salariés en parcours

soit 230 ETP



76% des salariés ont un niveau inférieur au Bac



### TREMLIN VERS L'EMPLOI

