

# CHIFFRES CLÉS

## L'IAE en 2019

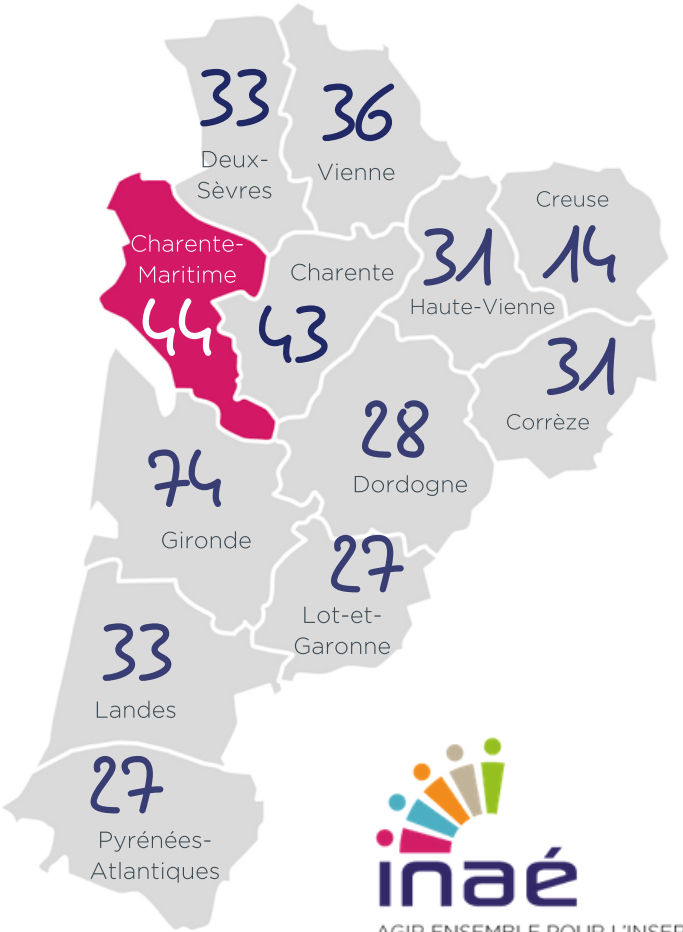
Inscription par l'Activité Economique

### CHARENTE-MARITIME

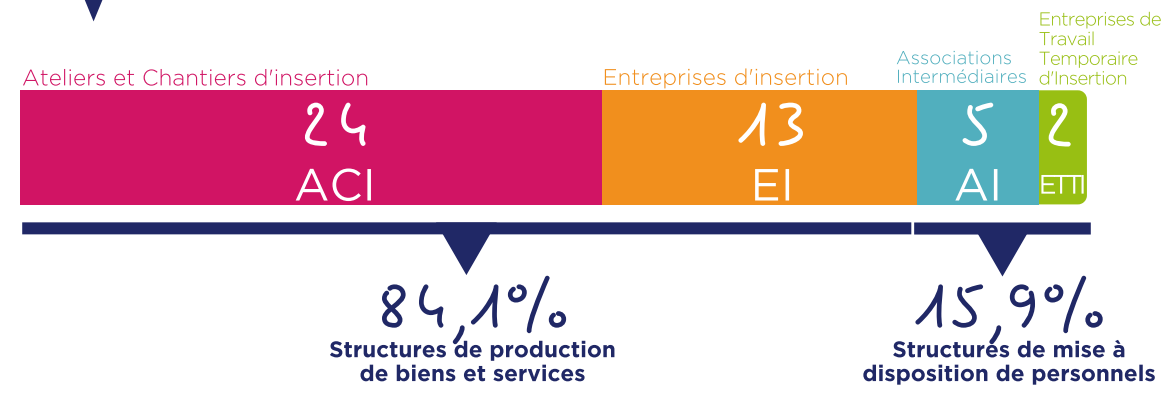
17

44 SIAE

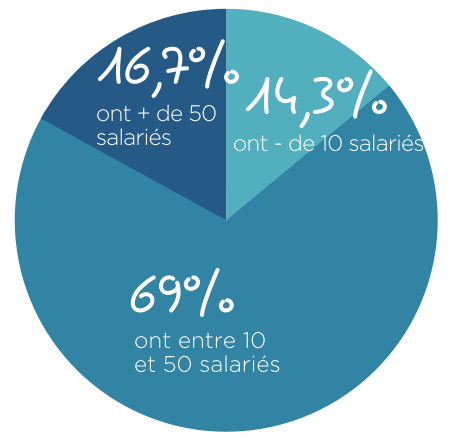
3360 Salariés en parcours



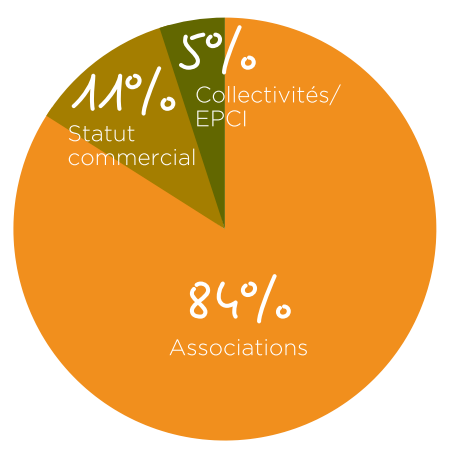
## PORTRAIT DES SIAE



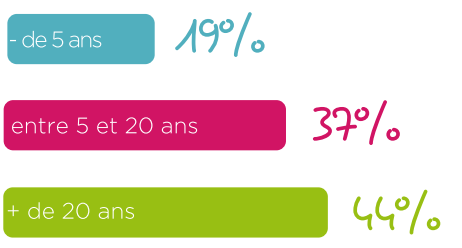
### RÉPARTITION PAR TAILLE (ETP)



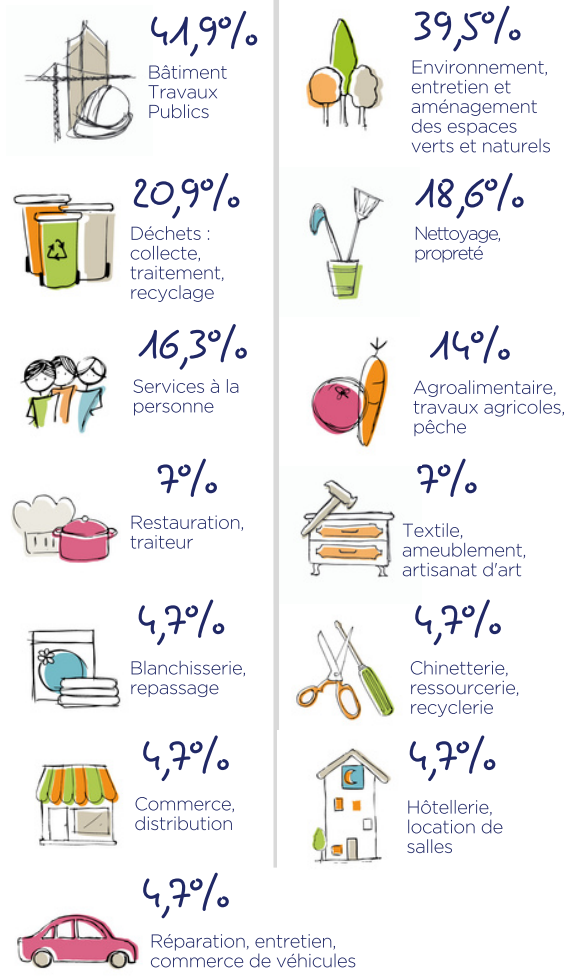
### STATUT JURIDIQUE



### ANCIENNETÉ



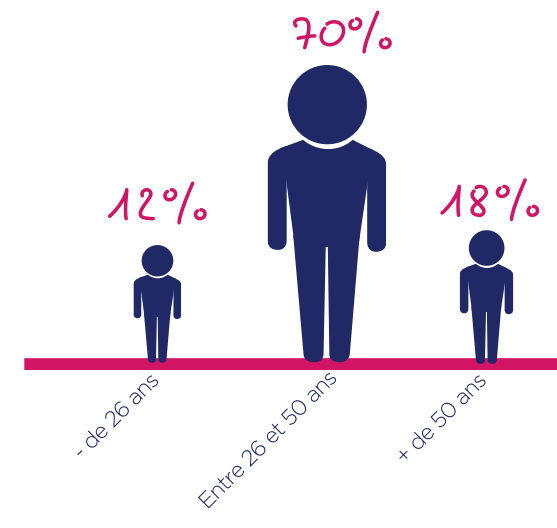
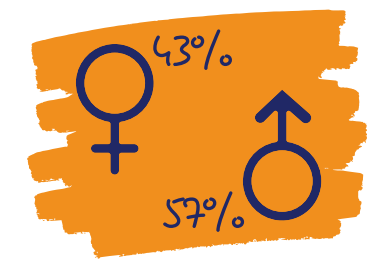
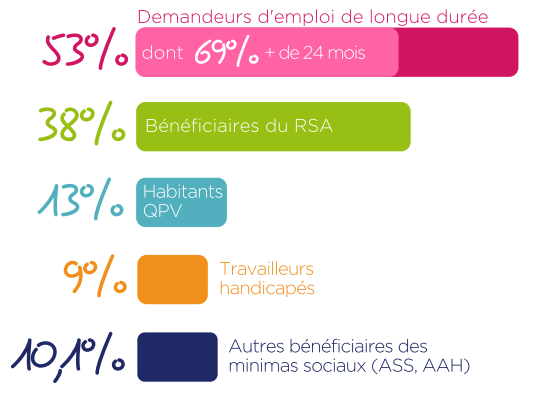
### SECTEURS D'ACTIVITÉ



## IMPACT SOCIAL

### PROFIL DES SALARIÉS

3360 Salariés en parcours  
soit 990 ETP



81% des salariés ont un niveau inférieur au Bac

### TREMPIN VERS L'EMPLOI

